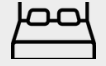
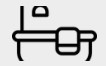


AURELIAN



3



2.5



2



2

ROMA FACADE



HOME AREA

Ground Floor 189.89 m2

Garage 36.36 m2

Porch 6.54 m2

Total 232.8m2
25.06sqsq

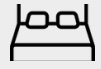
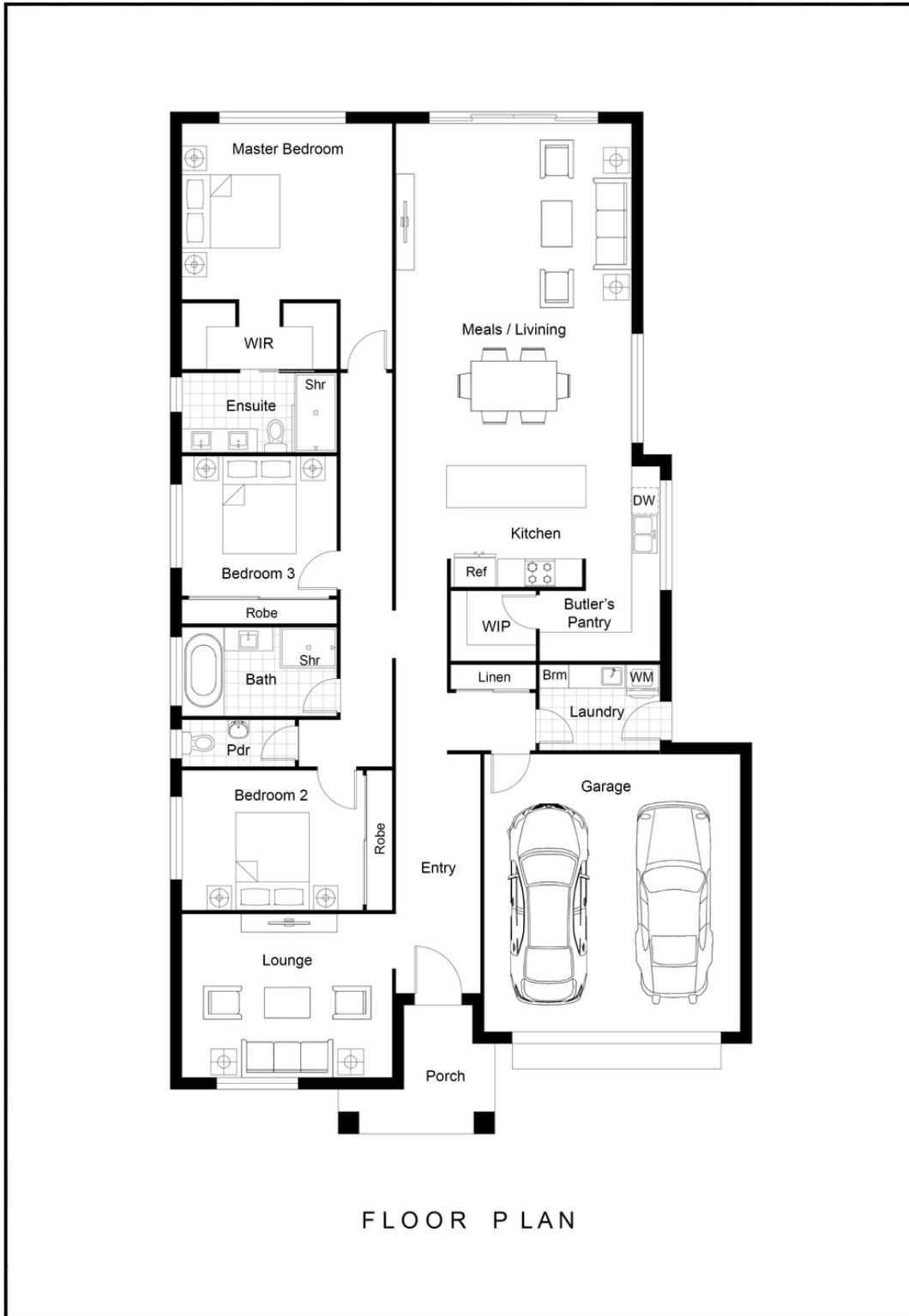
HAMPTON FACADE

When you enter Aurelian, you will be greeted with a large lounge area which can be used as a second living or a large study area. The master bedroom, ensuite and a large walk through robe are located at the rear of the home for privacy.

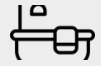
This 3 bedroom family home has plenty of room for the family to spread out!



AURELIAN



3



2.5



2



2

THE JEM HOMES DIFFERENCE

- Our client's satisfaction is our number one priority.
- We're completely committed to delivering on our promises to you.
- We'll face any obstacles head on and come up with innovative solutions that meet your needs.

