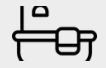


DAMIAN



3



2.5



1



2

HAMPTON FACADE



HOME AREA

Ground Floor	144.70 m ²
Garage	36.43 m ²
Porch	4.99 m ²
Total	186.19 m ² 20.04 sqs

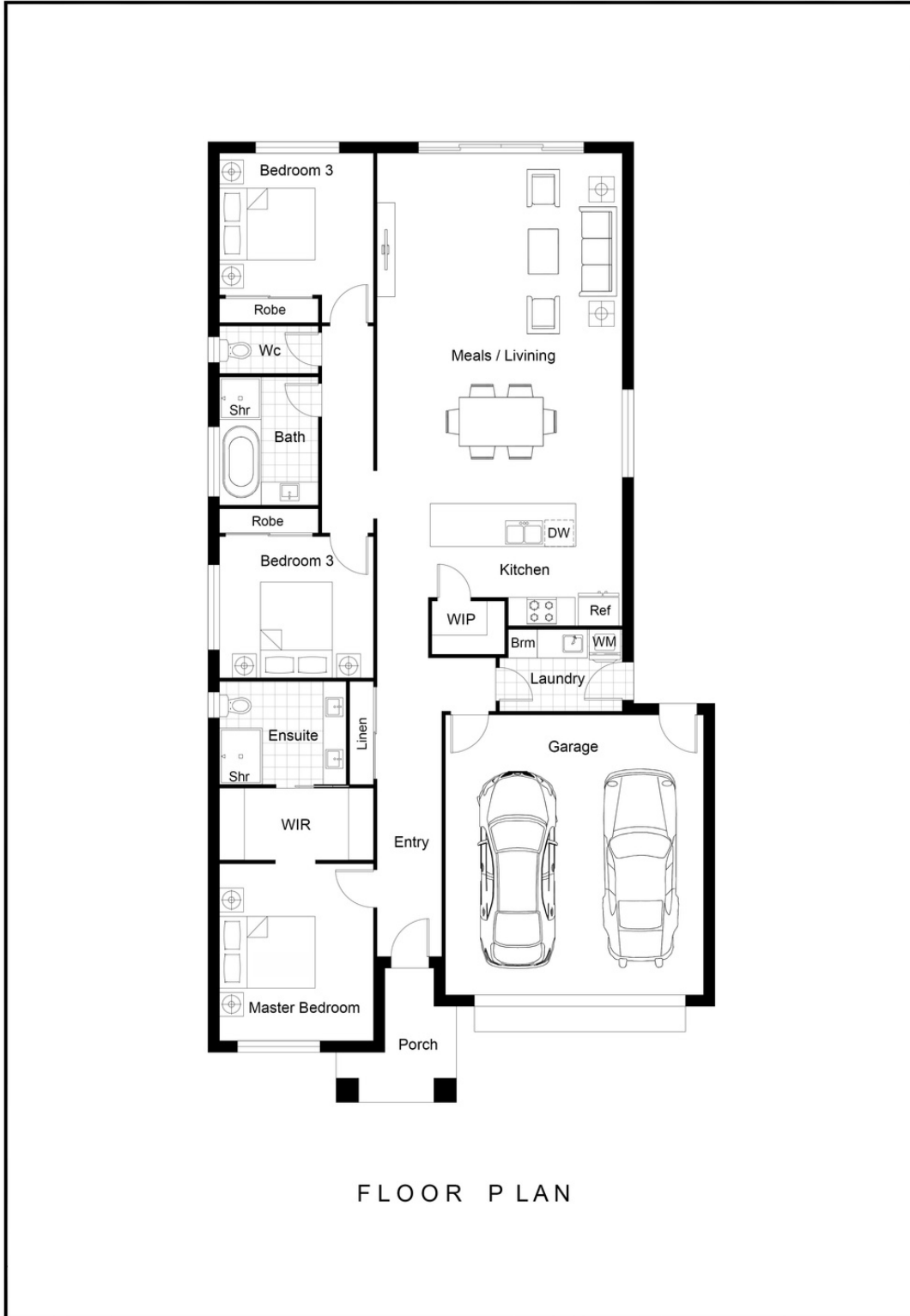
VOUGE FACADE

The Damian has everything you need in a smaller home. Bedrooms are situated to the left of the home while the open plan living area sits on the right to allow for privacy and convenience.

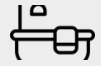
The Damian also presents a variety of clever storage solutions including a walk in pantry and large laundry to keep you organised.



DAMIAN



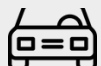
3



2.5



1



2

THE JEM HOMES DIFFERENCE

- Our client's satisfaction is our number one priority.
- We're completely committed to delivering on our promises to you.
- We'll face any obstacles head on and come up with innovative solutions that meet your needs.

