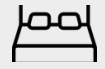


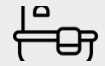
JULIAN



RYDE 2 FACADE



4



2.5



2



2



1



OREGON FACADE

HOME AREA

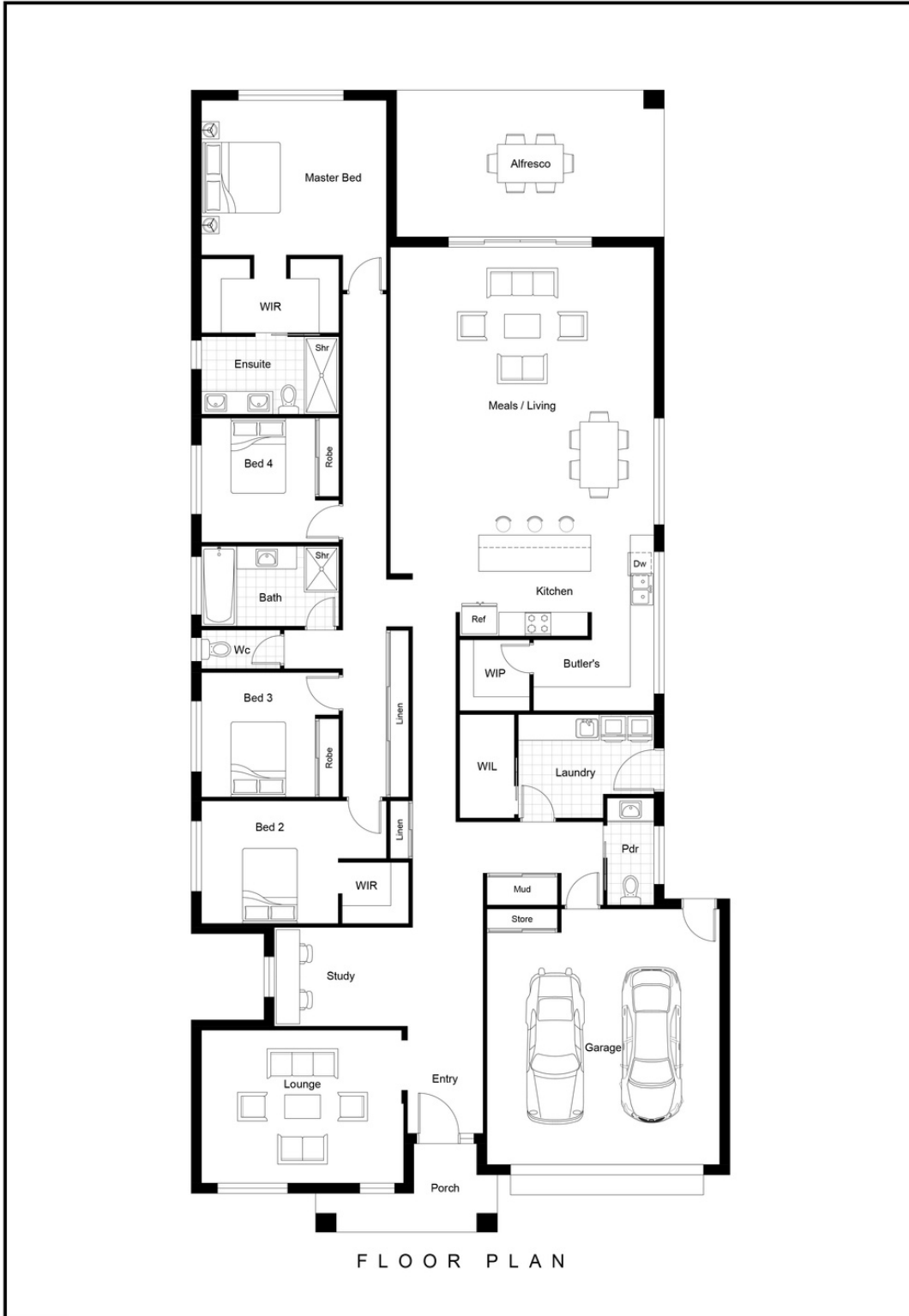
Ground Floor	279.05 m ²
Garage	43.8 m ²
Porch	7.09 m ²
Alfresco	26.60m ²
Total	356.54m ² 38.33sqs

When you walk through the Julian, you will be greeted by the second living space right at the front followed by a spacious study area, perfect for those working from home.

This design perfectly separates the bedrooms on the left side from the shared areas to the right of the home which allows for convenience and comfort for the whole family.



JULIAN



4



2.5



2



2



1

THE JEM HOMES DIFFERENCE

- Our client's satisfaction is our number one priority.
- We're completely committed to delivering on our promises to you.
- We'll face any obstacles head on and come up with innovative solutions that meet your needs.

