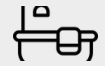


LUCIAN



4



2.5



2



2

VOUGE FACADE



HOME AREA

Ground Floor	215.73 m ²
Garage	36.37 m ²
Porch	6.54 m ²
Alfresco	20.76 m ²
Total	279.4 m ² 30.08 sqs

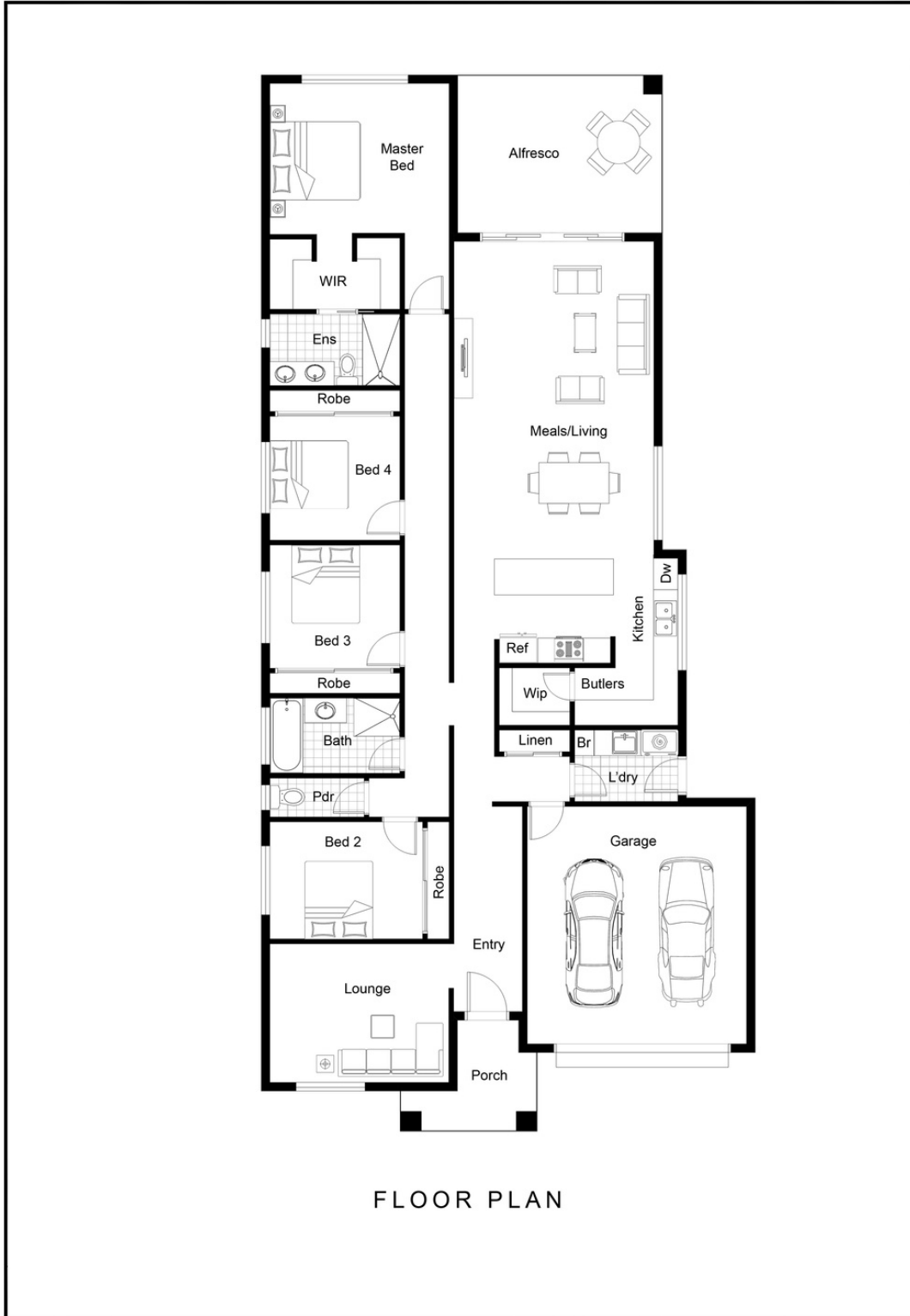
ROMA FACADE

With the Lucian, you can enjoy infinite space for you and your family, featuring a secondary living room right at the front for the kids and a spacious Kitchen with Butlers pantry.

The highlight of the home is the large alfresco ideally located off the main living hub, perfect from entertaining!



LUCIAN



4



2.5



2



2

THE JEM HOMES DIFFERENCE

- Our client's satisfaction is our number one priority.
- We're completely committed to delivering on our promises to you.
- We'll face any obstacles head on and come up with innovative solutions that meet your needs.

