

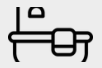
# OLIVIA



ASH FACADE



4



3.5



2



2



1



RYDE FACADE

## HOME AREA

Ground Floor 148.38 m<sup>2</sup>

First Floor 122.39 m<sup>2</sup>

Garage 36.17 m<sup>2</sup>

Porch 5.93 m<sup>2</sup>

Alfresco 13.06 m<sup>2</sup>

Total 325.93 m<sup>2</sup>

35.08 sqs

The bespoke Olivia has a number of design features.

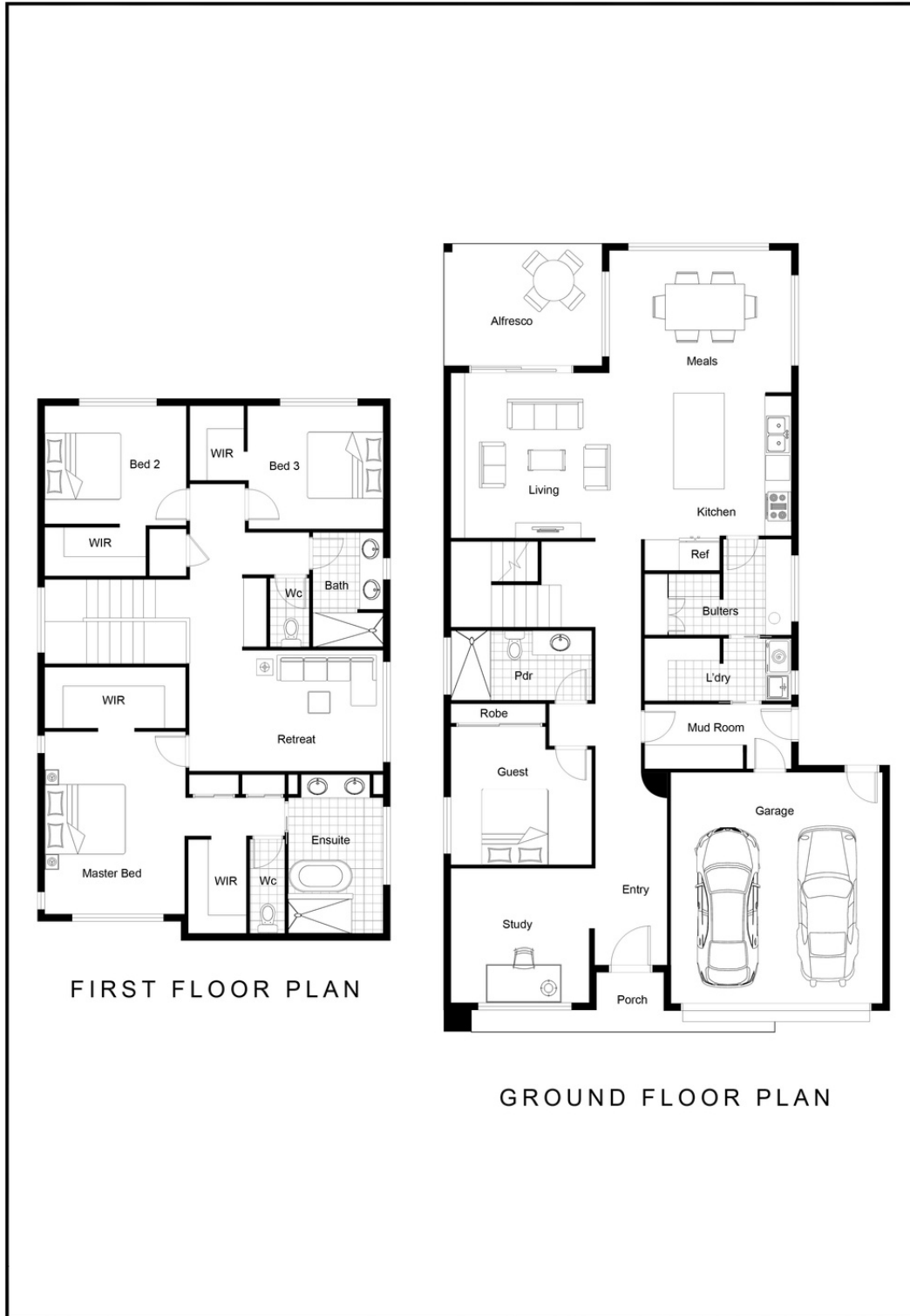
The dedicated mudroom that leads into the laundry and then pantry backs onto the garage which makes for easy access for the weekly shop.

The home welcomes you with a substantial entry and then further up the hall is a large and open plan meals, kitchen and family area which opens up to a generously sized alfresco.

Upstairs, you will find a large retreat and walk in linen with all bedrooms incorporating walk in robes. The master bedroom located at the front of the house has double walk-in robes and a large ensuite with freestanding bath and king sized shower.



# OLIVIA



4



3.5



2



2



1

## THE JEM HOMES DIFFERENCE

- Our client's satisfaction is our number one priority.
- We're completely committed to delivering on our promises to you.
- We'll face any obstacles head on and come up with innovative solutions that meet your needs.

