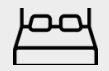


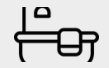
# SEBASTIAN



RYDE 1 FACADE



4



2.5



2



2



1



BAYSIDE FACADE

## HOME AREA

Ground Floor 254.1 m<sup>2</sup>

Garage 43.11 m<sup>2</sup>

Porch 6.84 m<sup>2</sup>

Alfresco 24.84m<sup>2</sup>

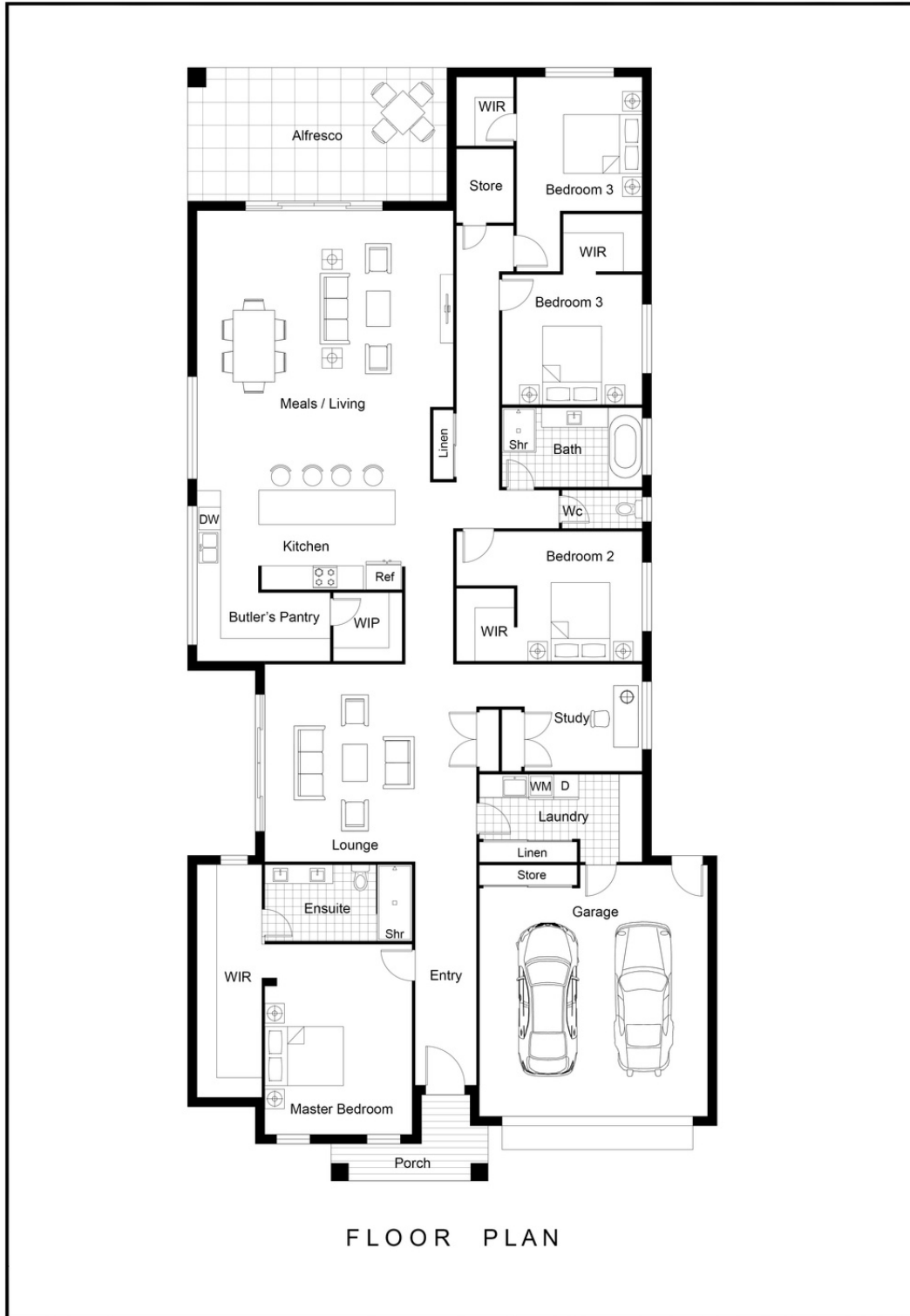
Total 328.89 m<sup>2</sup>  
35.4 sqs

The Sebastian offers a spacious central living hub leading into a very large alfresco, making it the perfect place to entertain your family and friends with comfort.

Featuring extensive storage areas and the master bedroom located towards the front, this home has everything you need and more!



# SEBASTIAN



4



2.5



2



2



1

## THE JEM HOMES DIFFERENCE

- Our client's satisfaction is our number one priority.
- We're completely committed to delivering on our promises to you.
- We'll face any obstacles head on and come up with innovative solutions that meet your needs.

