

SOPHIA



VOUGUE FACADE



HOME AREA

Ground Floor	1119.89 m2
First Floor	114.04 m2
Garage	36.16 m2
Porch	3.13 m2
Alfresco	15.27 m2
Total	288.49 m2 31.05 sqs

ROMA FACADE

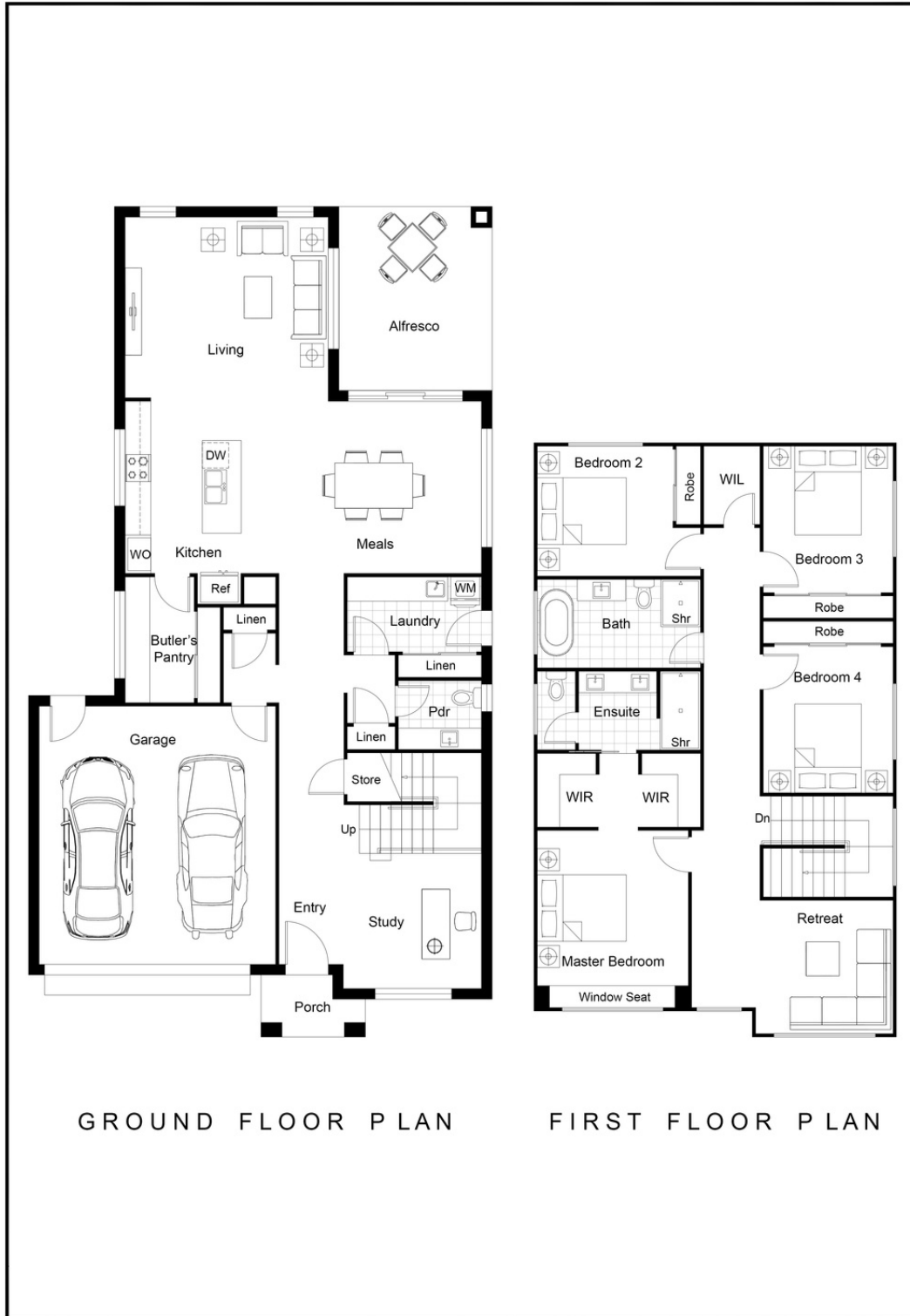
The Sophia has perfected everyday living, in a modest home size.

Upon entry you are greeted with the convenience of working from home, in your very own home office. Services such as the laundry and powder room are located to the centrally of the home. Your kitchen, dining and family areas span the entire width of the back of your home - this is a home built for living.

Upstairs, is a separate retreat area, and four bedrooms. The shared kids bathroom divides the master bedroom from the secondary bedrooms towards the back of the home to allow for privacy and functionality. The large master bedroom incorporates the generous walk through robe and ensuite which makes the perfect oasis after a long day at work.



SOPHIA



4



2.5



2



2



1

THE JEM HOMES DIFFERENCE

- Our client's satisfaction is our number one priority.
- We're completely committed to delivering on our promises to you.
- We'll face any obstacles head on and come up with innovative solutions that meet your needs.

